

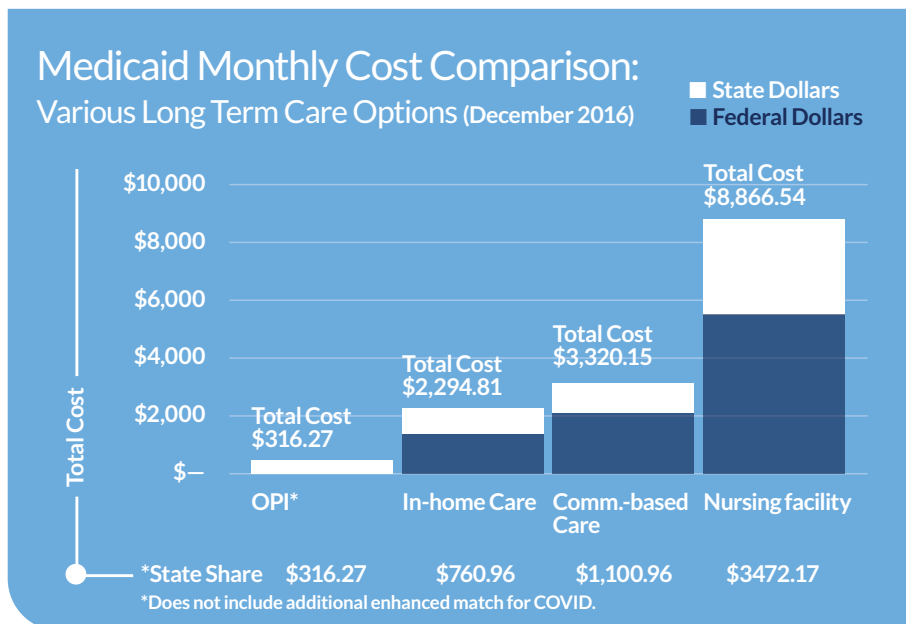


Oregon Association
of Area Agencies on
Aging & Disabilities

Oregon Project Independence: Serving Oregon's Neediest Seniors

Oregon Project Independence has successfully kept at-risk seniors in their own homes and away from expensive Medicaid services.

Oregon Project Independence has successfully kept at-risk seniors in their own homes and away from expensive Medicaid services. The financial pay-off is immediate. It costs Oregon \$316 per month in state funds to serve a consumer through OPI, \$760 per month in state funds to serve a Medicaid in-home service consumer; \$1,100 in state funds per month to serve a Medicaid consumer in a community-based care facility; and \$3,472 per month in state funds to serve a Medicaid consumer in a nursing facility.



100%

Seniors with more than \$4253 in monthly income pay 100% of the cost of their OPI service.

In FY 2014, OPI collected \$116,723 in program co-pay fees. Only seniors with incomes of less than \$1596 per month are exempt from co-pays. People pay progressively higher co-pays as their income increases, until at \$4253 per month people pay the full amount.

96%

Over **96%** of all OPI consumers are at income levels that would qualify them for Medicaid services, which is at or below 200% of the Federal Poverty Level. The federal poverty level is now \$1073.33 per month.



Medicaid long-term care consumers also receive the Oregon Health Plan benefits, at an additional cost to the state. OPI consumers do not receive these benefits.

10%

The cost to the state for OPI services is approximately **96%** less than the cost of care in a Medicaid funded nursing facility.

For more information, please contact Nicole Palmateer at nicole@o4ad.org or 503-428-6228.



Oregon Association of Area Agencies on Aging & Disabilities

T: 503-463-8692
F: 503-463-8715
E: info@o4ad.org

PO Box 2777
Salem, OR 97308
www.o4ad.org

*October 2014.
Other Data Sources: for In-home, CBC, and NF-services, DHS, February 2014, "2015 Ways and Means Human Services Subcommittee, Aging and People with Disabilities" (PowerPoint). Federal poverty is for 2015. OPI fee collection number from DHS "OPI Allocation-Expenditures Analysis April 2015."